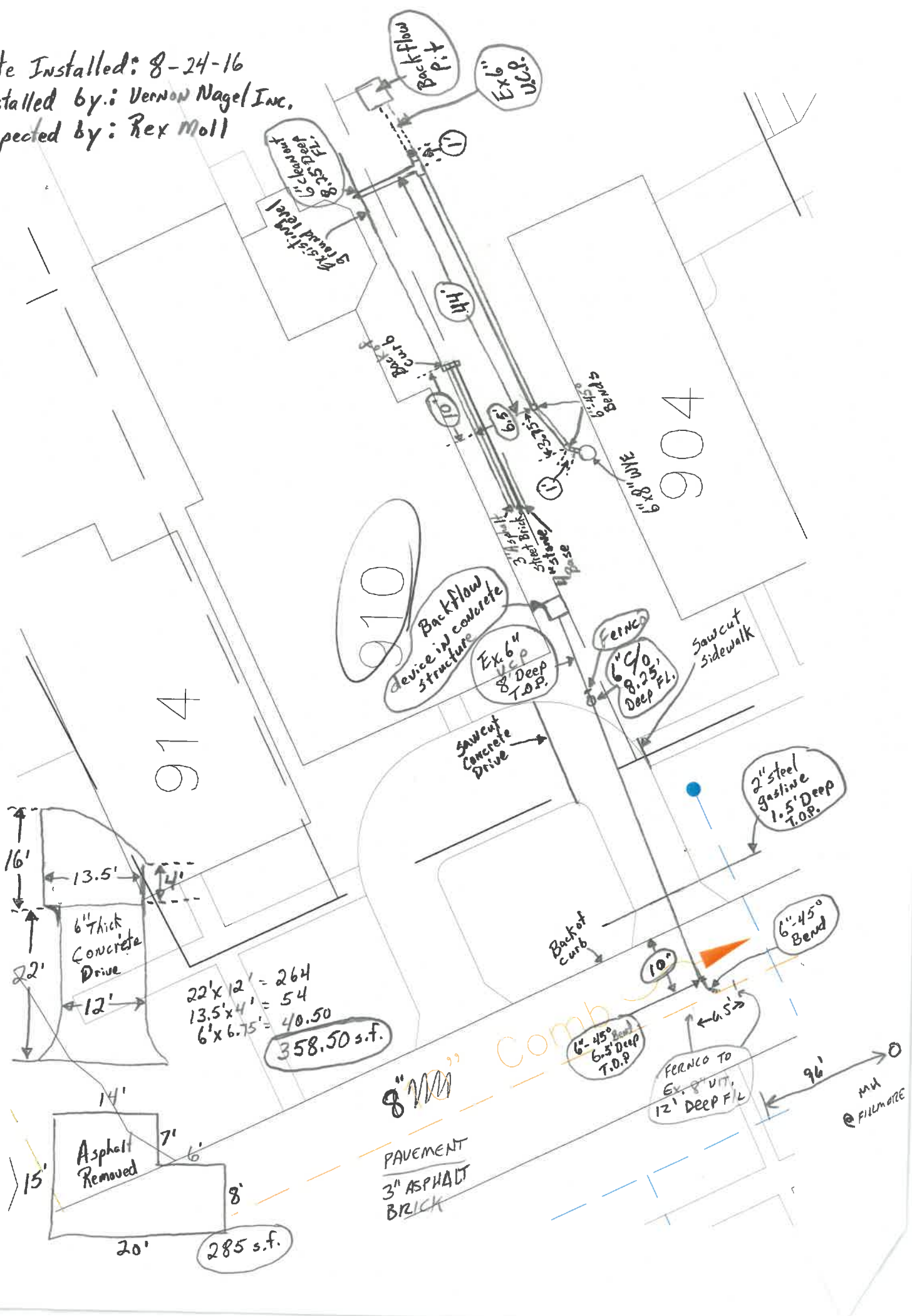
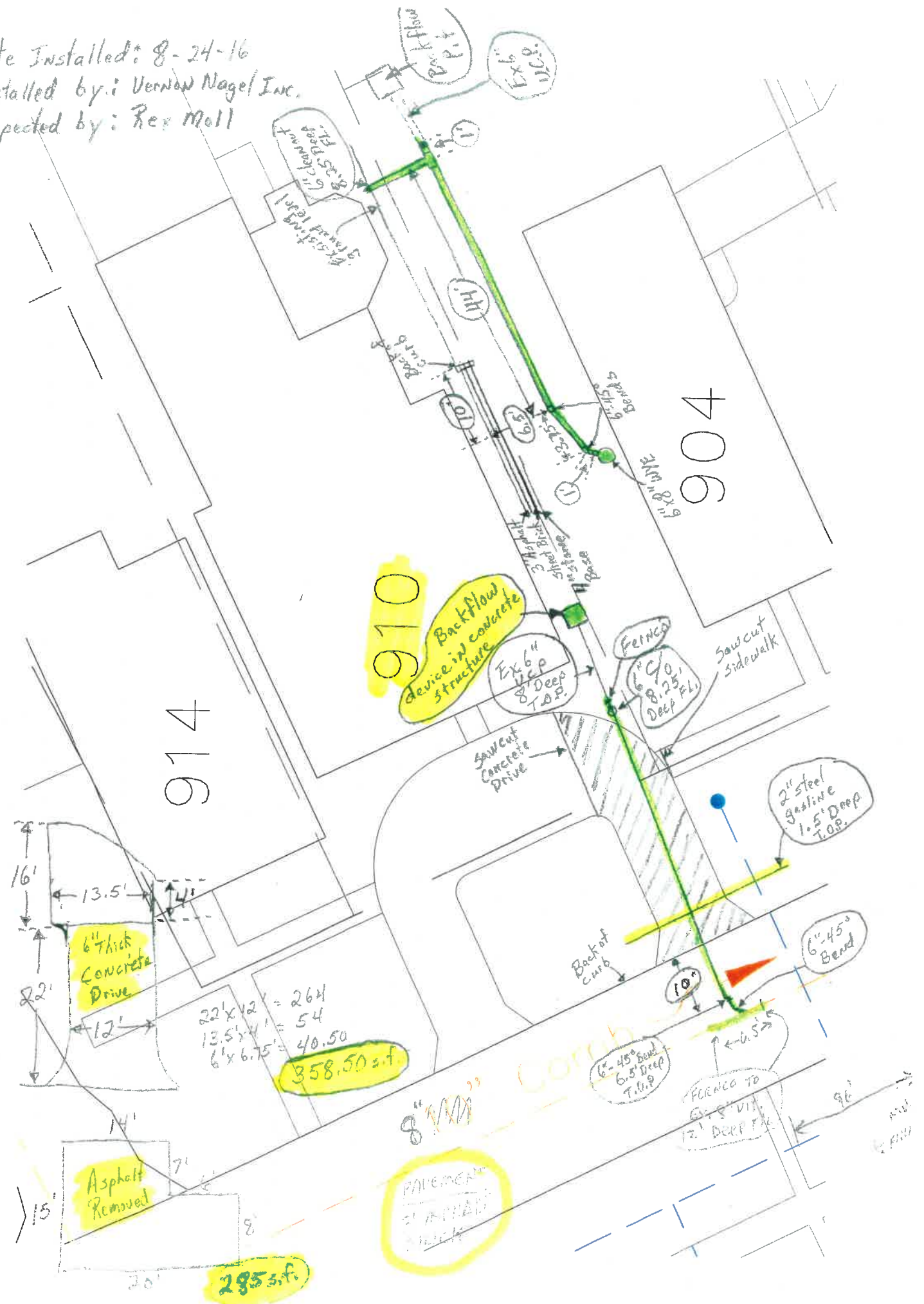


Date Installed: 8-24-16
 Installed by: Vernon Nagel Inc.
 Inspected by: Rex Moll



Date Installed: 8-24-16
 Installed by: Vernon Nagel Inc.
 Inspected by: Rex Moll



910
 Backflow device in concrete structure

6" Thick Concrete Drive

16'
 13.5'
 4'
 22'
 12'

22x12 = 264
 13.5x4 = 54
 6x6.75 = 40.50
 358.50 s.f.

Asphalt Removed

295 s.f.

8" MAN
 PAVEMENT
 2' ASPHALT
 2' THICK

6"-45° Bend
 6.5' Deep
 T.O.P.

FERRO TO
 6'-5" DIA.
 12' DEEP T.O.P.

2" Steel Gasline
 1.5' Deep
 T.O.P.

6"-45° Bend

904

914

11"

10"

8"

6"

4"

3"

2"

1"

6"

4"

3"

2"

1"

6"

4"

3"

2"

1"

6"

4"

3"

2"

1"

6"

4"

3"

2"

1"

6"

4"

3"

2"

1"

6"

4"

3"

2"

1"